



Skull base petroclival meningioma: Case management and strategy

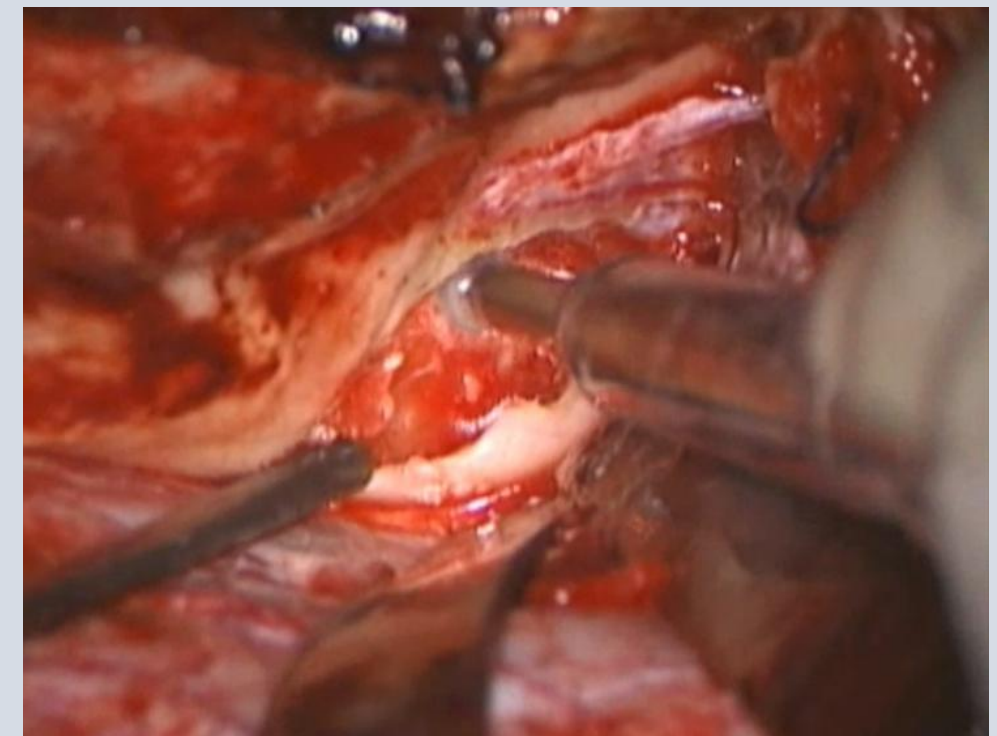
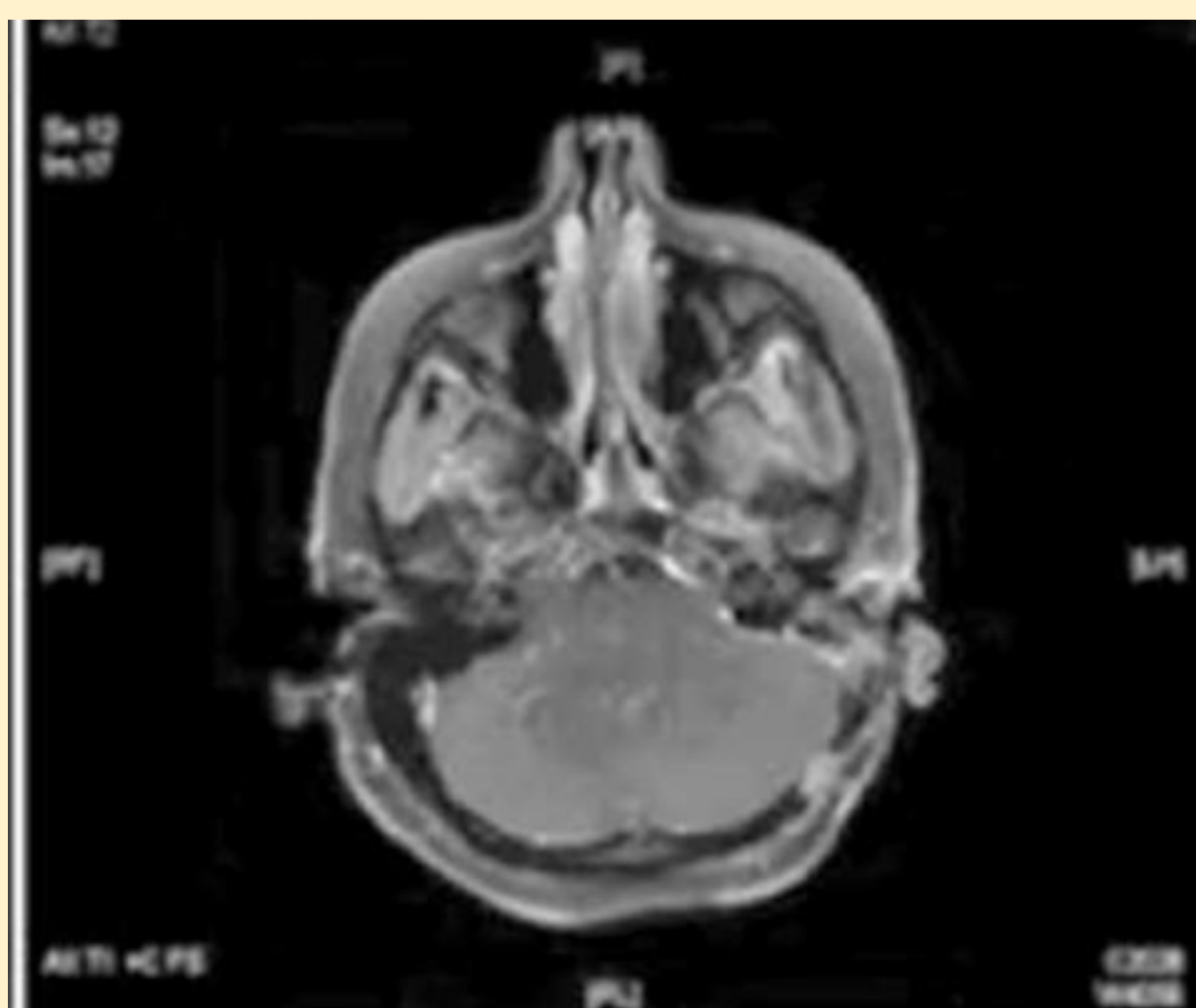
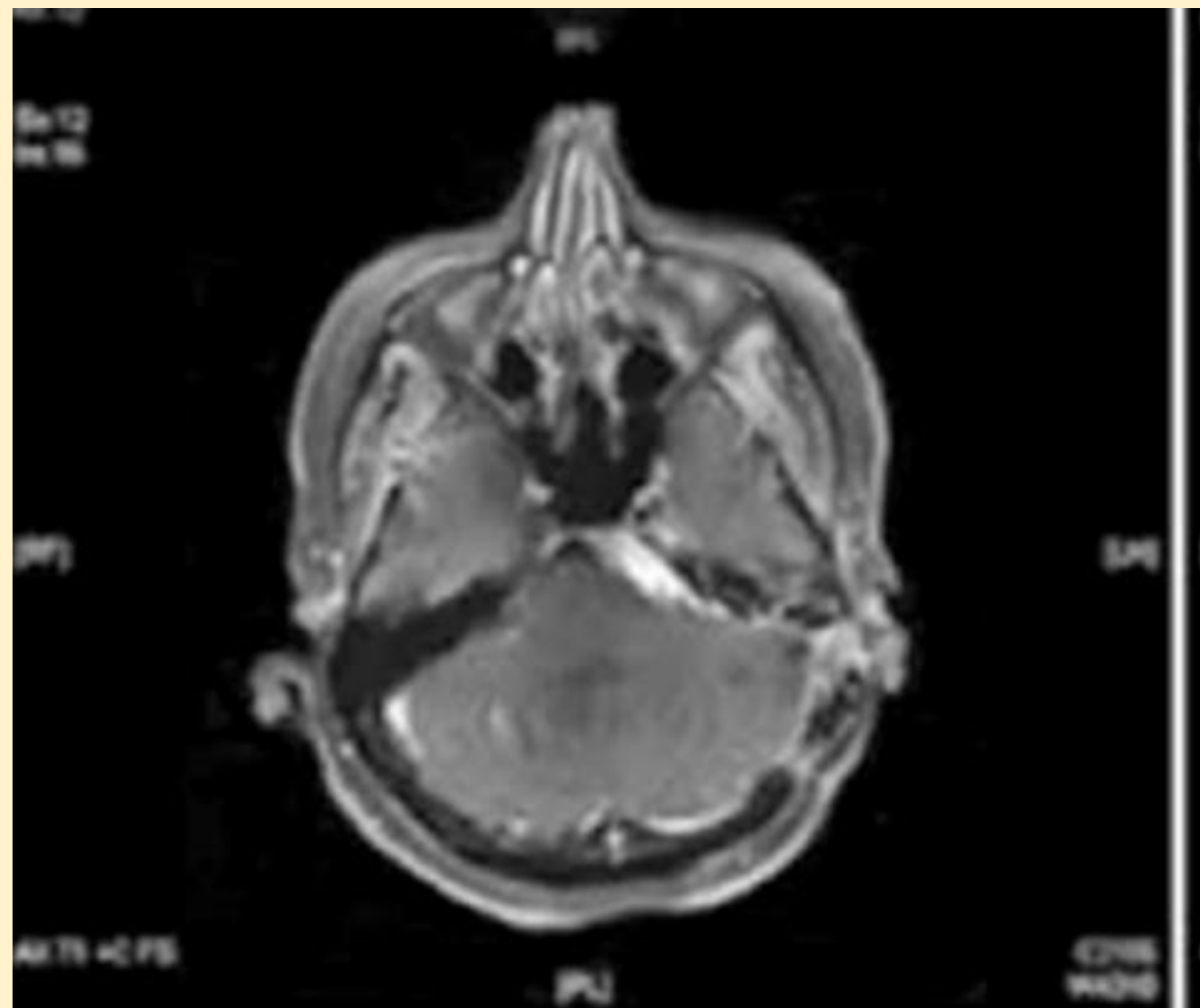
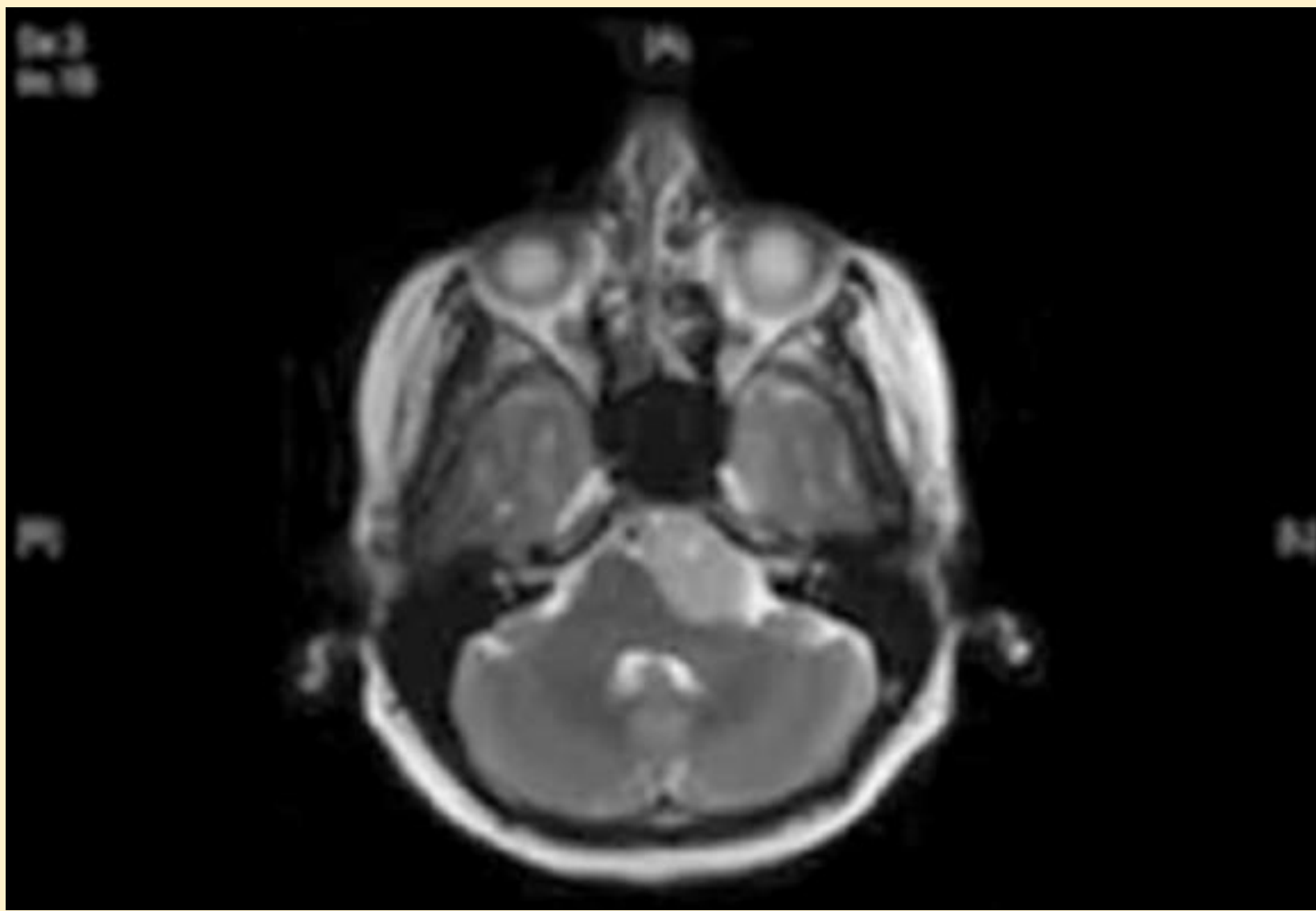
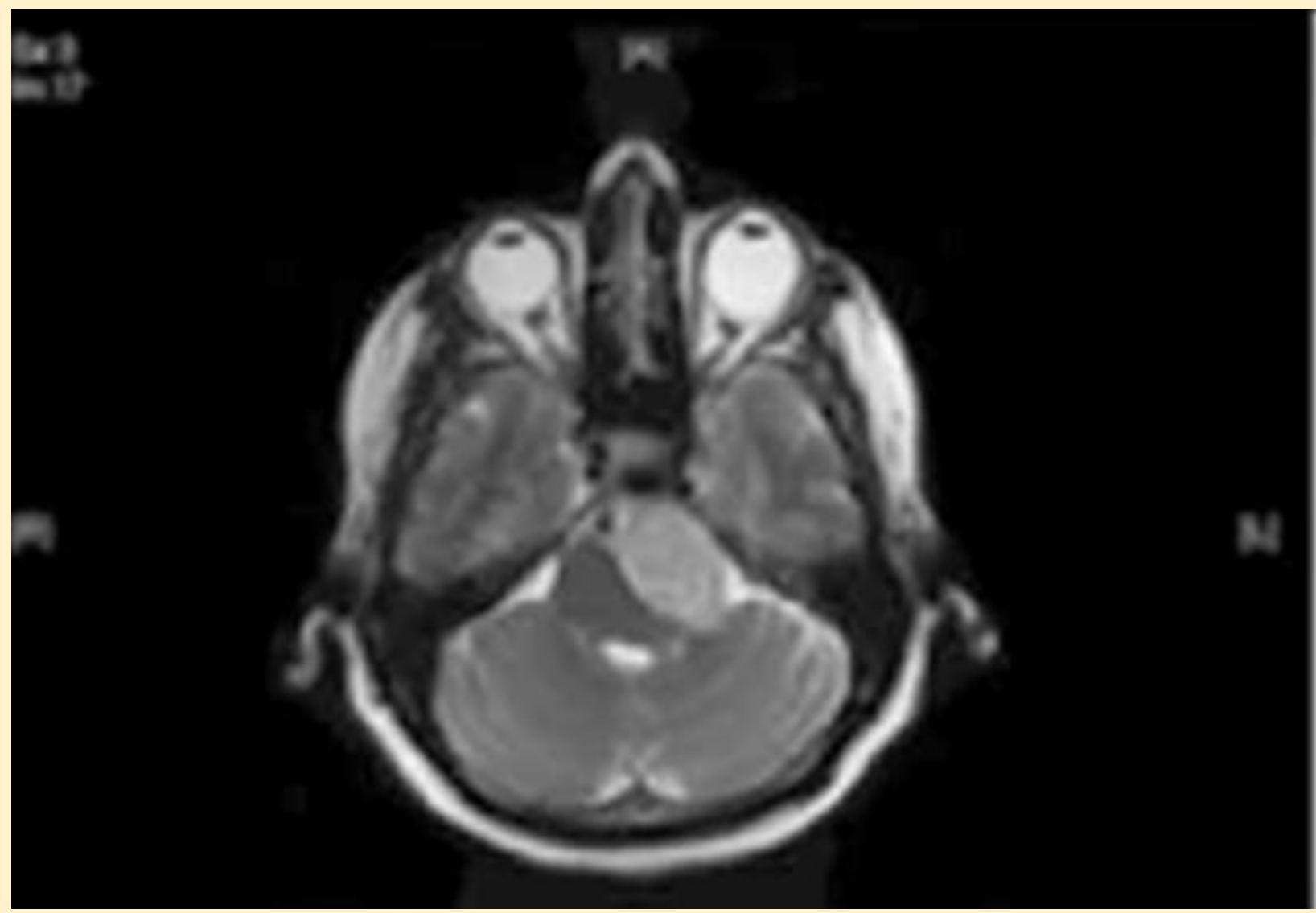
Petroclival, Meningiomas, Total removal, Developing country

The optimal management of petroclival meningiomas (PCMs) continues to be debated along with several controversies that persist.

Various skull base approaches have been used in their treatment, and deciding which is the optimal one remains controversial. Attempts at achieving gross- or near-total resections are associated with an increased rate of morbidity and mortality. In this case we perform anterior transpetrosal approach (Kawase) to remove petroclival meningioma.

METHODS:

A 45 years old male came with chief complaint headache. MRI T1 contrast showed hyperintense mass at left petroclival region.



SUMMARY:

We have performed anterior transpetrosal approach (Kawase approach) to remove petroclival meningioma totally without any neurological deficit in developing country Bandung city Indonesia.

Agung Budi Sutiono, MD, PhD
Department of Neurosurgery

Hasan Sadikin Hospital - Padjadjaran University, Bandung Indonesia